



# Annual Report 2017-2018

## Hospitality Mutuality

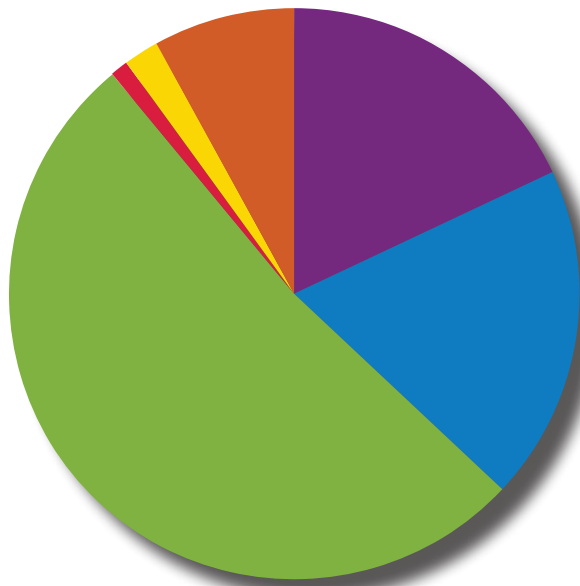
# TRANSFORMATION

123 E Price Street



# FINANCIAL INFORMATION

## INCOME

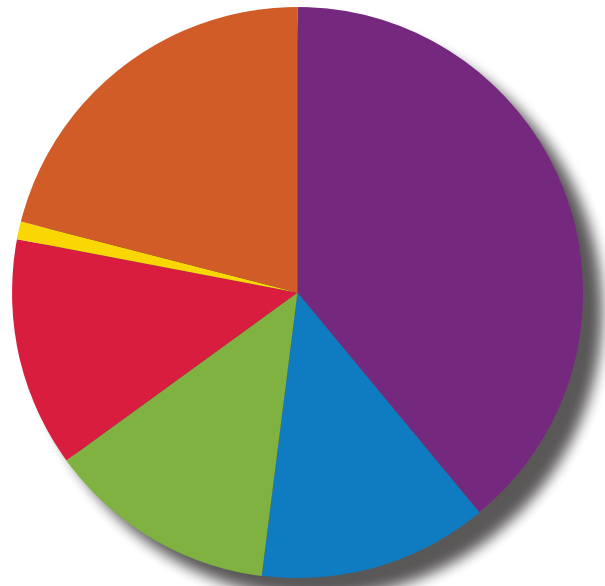


Foundations	\$326,800.00	18%
Events	\$340,356.00	19%
Individual Donations*	\$946,530.00	52%
Community Donations	\$ 25,751.00	1%
Corporate Donations	\$ 31,233.00	2%
In-Kind	\$143,641.00	8%

\$1,814,311.00

*\*Includes capital campaign contributions*

## EXPENSES



Dining Room	\$557,787.00	39%
Health Center	\$192,342.00	13%
Social Services	\$183,731.00	13%
Legal Services	\$185,773.00	13%
Art Program	\$ 10,133.00	1%
General Operating	\$307,267.00	21%

\$1,437,033.00

## YOUR IMPACT FOR FISCAL YEAR 2017 - 2018

### Your Support Makes a Difference

 **20,144**  
Meals were Served

 **1,504**  
Social Services  
Encounters

 **1,801**  
Health Center  
Encounters

 **507**  
Legal Center  
Encounters

 **23,956**  
Volunteer Hours



# THANKS TO YOUR KINDNESS, IT WAS A TRANSFORMATIVE YEAR.



## september

September marked the midpoint of the renovation. Meals and client services continued just a few blocks away at FUMCOG.

## october

The Ambler theater was filled for the premiere of the Face to Face documentary. Villanova's Stephen McWilliams, PhD and Matt Marencik captured the struggles our clients experience and the hospitality, mutuality and transformation they receive at Face to Face.



## november

We celebrated the 25th Anniversary of the Turkey Trot. In 1992, Jim and Frannie Maguire, along with their children, held a five-mile Turkey Trot in Fairmount Park to benefit Face to Face. The race has grown from a family and friends fundraiser to a Philadelphia tradition with over 1,100 runners and has raised over \$2 million.



## december

After 8 months of renovations, we reopened our East Price Street doors on December 18, 2017.



## january

Health, legal and social services resumed at East Price Street. The renovations have allowed for more collaboration among services. On January 21, 2018 we celebrated our grand reopening. Over 400 clients, volunteers and donors took part in the event which included blessings from multiple religious leaders, tours of the renovated facility and a delicious, hot lunch.



## february

Our Young Friends of Face to Face hosted a Dine and Donate event. The mission of this group is to socialize, network and volunteer in ways that support and promote the mission of Face to Face.



## march

An electronic client database system, Apricot, was initiated. This will allow for more efficient record keeping and data extraction to measure the impact and coordination of our health, legal and social services.



## april

We reached our \$5 million goal for the Building to Serve, Community Begins Here capital campaign. We are so grateful to everyone who supported this major endeavor.



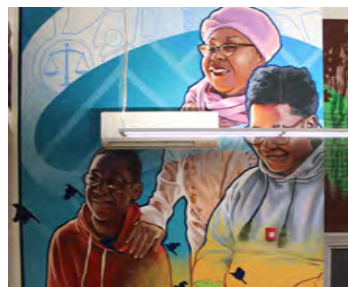
## may

Clients enjoyed an outing to a Phillies game. Throughout the year they are treated to various cultural trips.



## june

The design, painting and installation of our beautiful entryway murals were completed in June. Clients, supporters and staff celebrated with a Mural Arts dedication on June 15, 2018.



## july

On July 27, 2018 we expanded our meal service to include breakfast one day a week. Guests enjoy a delicious, nutritious start to their day. We look forward to our breakfast expansion.



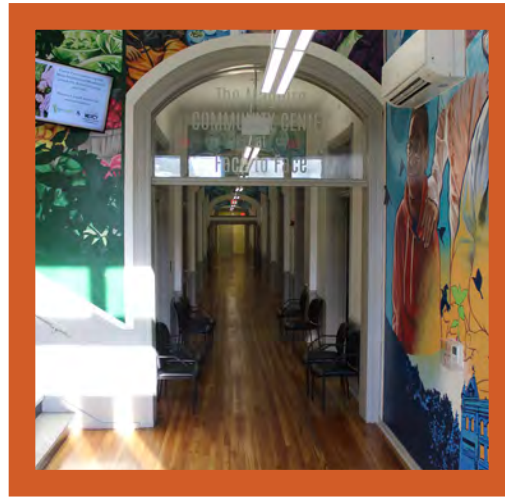
## august

Face to Face began participating in The Pew Charitable Trust's Evaluation Capacity Building Initiative which provides 15 months of training and coaching. Through this process we are learning cutting edge methods for meaningful data collection and rigorous analysis to evaluate our programs and adjust as needed.





# TRANSFORMATION



## Hospitality



EXECUTIVE DIRECTOR  
Mary Kay Meeks-Hank

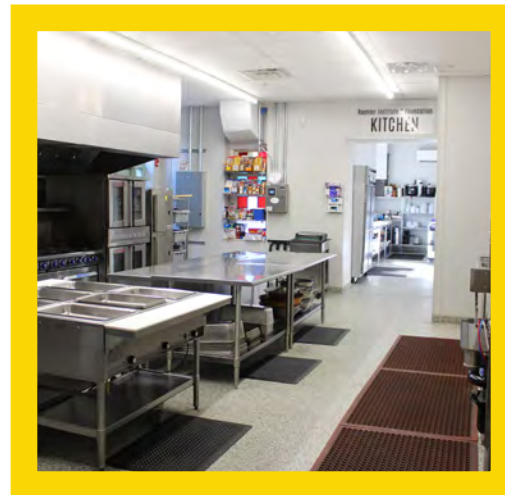
### BOARD OF DIRECTORS 2017-18

Michael E. Sacks, Chair  
Karen O'Neill, Vice Chair  
James R. Domenick, Treasurer  
Barbara Keeney, Secretary

Peter Bellwoar  
Rosemary E. Duffey  
Amanda Finnell  
Peg Havard  
Maureen Holland  
Tara Maguire  
Molly Mahon  
Joseph McIntyre  
Tom O'Rourke  
Jared Pontz  
Sylvester Peterka, C.M.  
Cortney Reed  
Miles Rittmaster  
Betsy Roak  
Bob Swartley  
Stacey Wright

### ADVISORY BOARD

Robert Elfant  
William Ewing  
Betsy Longstreth  
Bill MacDonald  
Ron Pete  
Ken Weinstein



## Mutuality

FOLLOW US

SUBSCRIBE

VOLUNTEER

STAY  
CONNECTED

[www.facetofacegermantown.org](http://www.facetofacegermantown.org)



123 East Price Street • Philadelphia PA 19144  
(215) 849-0179 • [www.facetofacegermantown.org](http://www.facetofacegermantown.org)